

# Architecture

## INTERIOR

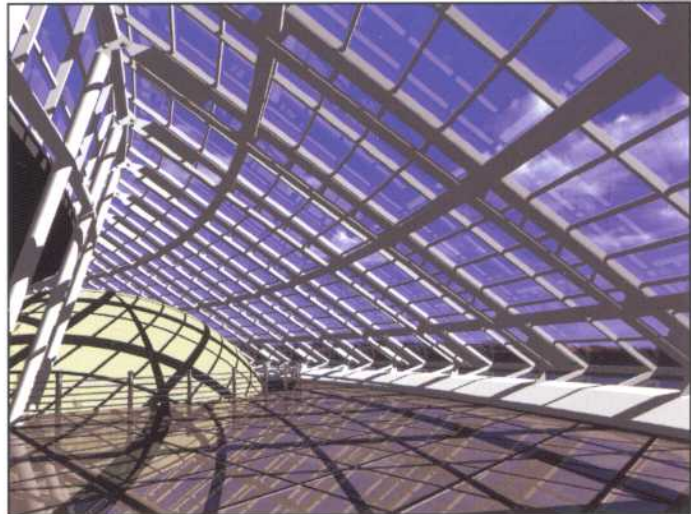


### ADLER PLANETARIUM

*David A. Maloney  
Super Sky Products Inc.  
Mequon, Wisconsin*



This interior image of the proposed skylight on the Adler Planetarium in Chicago was created to illustrate to the building owner and architect what the Super Sky skylight system would look like after installation. The model was created using EMS Powerpak and rendered in ModelView.



### THE JAPANESEQUE CAFE

*Satsuki Kitajima and Junko Dairaku  
Obayashi Corporation  
Tokyo, Japan*

This image was created using MicroStation and rendered with ModelView. Texture was applied to the walls, beams, and pillars by using wooden pattern mapping and light sources, which were incorporated to describe a real image.

### EXPRESS TERMINAL

*Dong-Joo Kim  
Shinban Architecture Engineers Co.  
Seoul, South Korea*



This image of an express terminal was designed using MicroStation, Project Architect, and ModelView. Displayed is the lobby area of a full 3D model focusing on the interior design of the area.

